

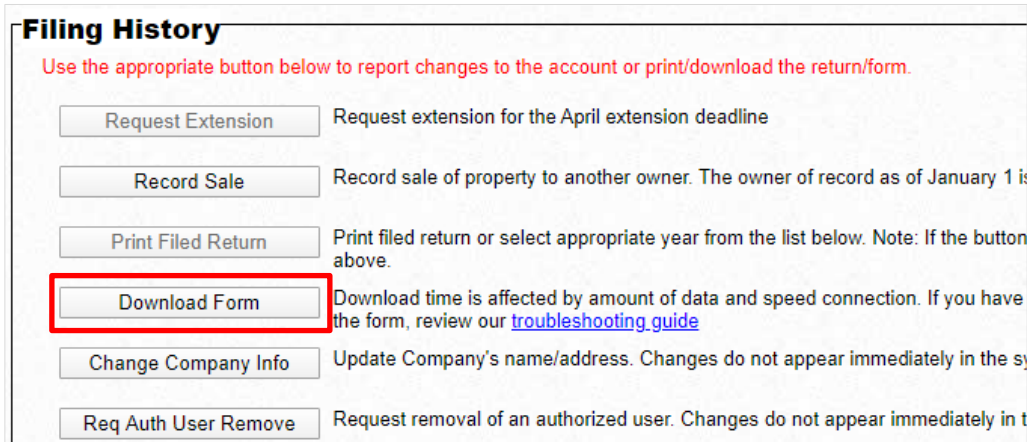


To file online, follow the steps below to download and open a fillable Adobe PDF document on your computer using Google Chrome. If these instructions do not work due to your computer settings, visit: helpx.adobe.com/reader.html.

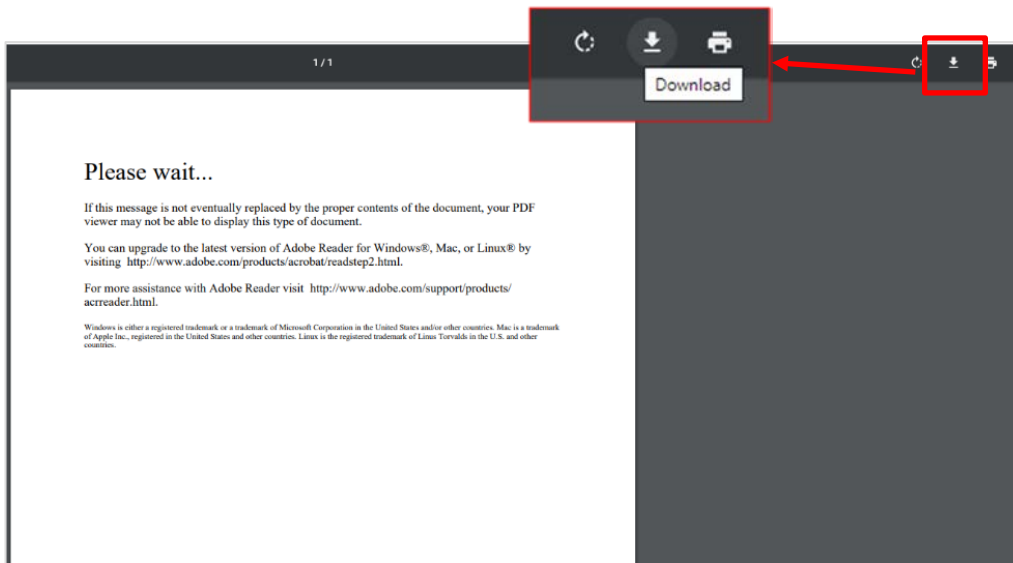
For other issues, visit revenue.wi.gov/Pages/Manufacturing/getstart.aspx.

A. Downloading your M-Form in Chrome

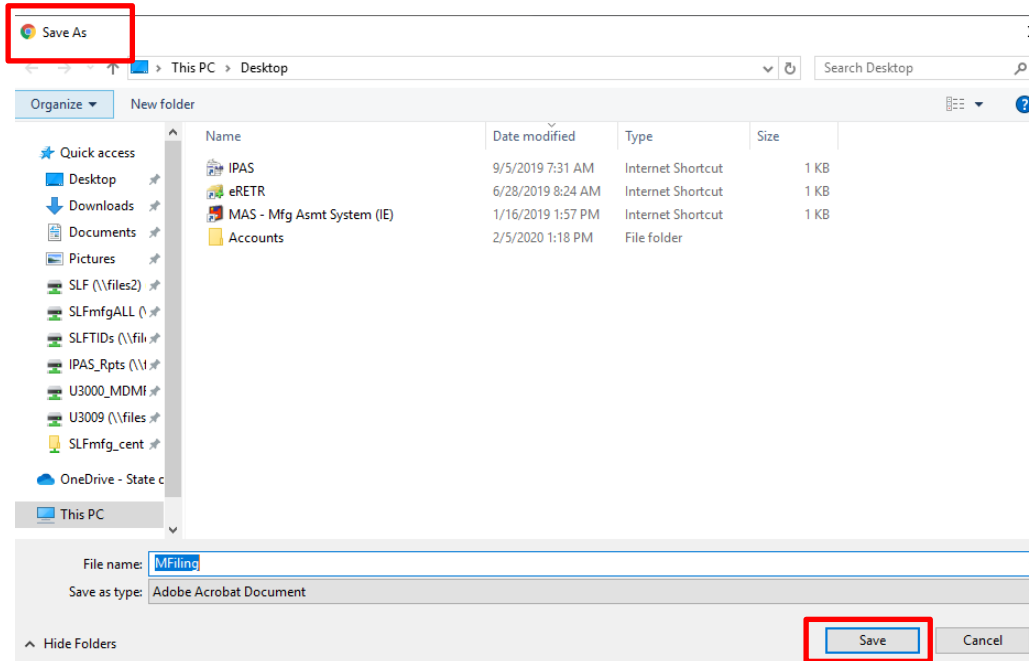
1. In the Manufacturing Assessment System (MAS), click "Download Form"



2. After clicking "Download Form," a "Please wait..." window appears. Click the download symbol in the top right corner.

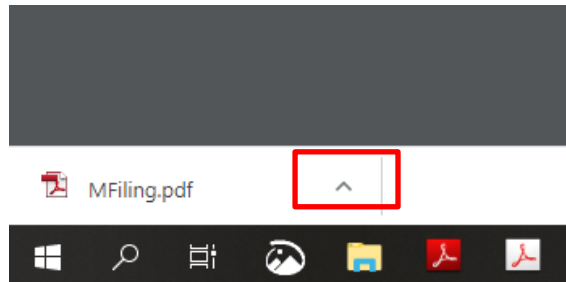


3. After clicking the download symbol, a "Save As" window appears – choose a location to save the form, then click "Save"

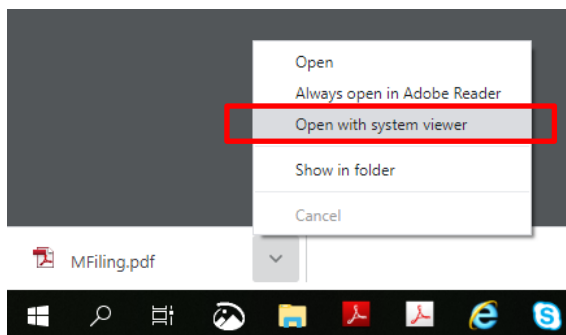


4. After saving the form, it appears at the bottom of your screen in the Google Chrome download bar.

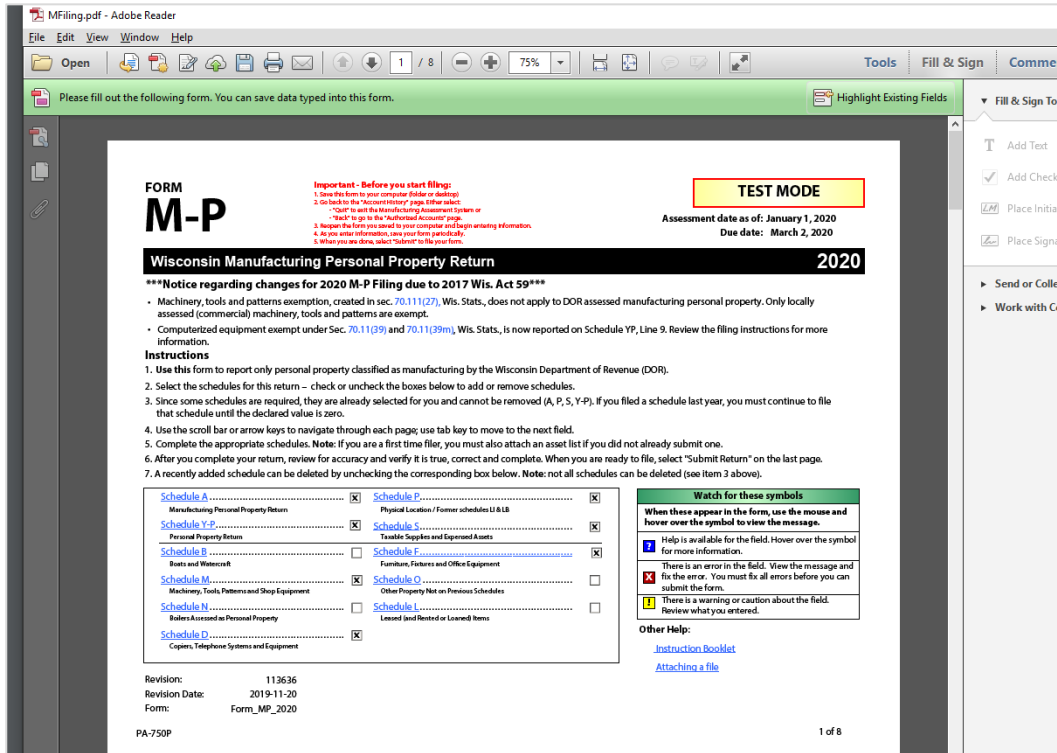
- a. Click the arrow symbol next to the document to view a dropdown menu



- b. In the dropdown, select "Open with system viewer." It may take up to 15 seconds to open. The form will open in Adobe Reader.



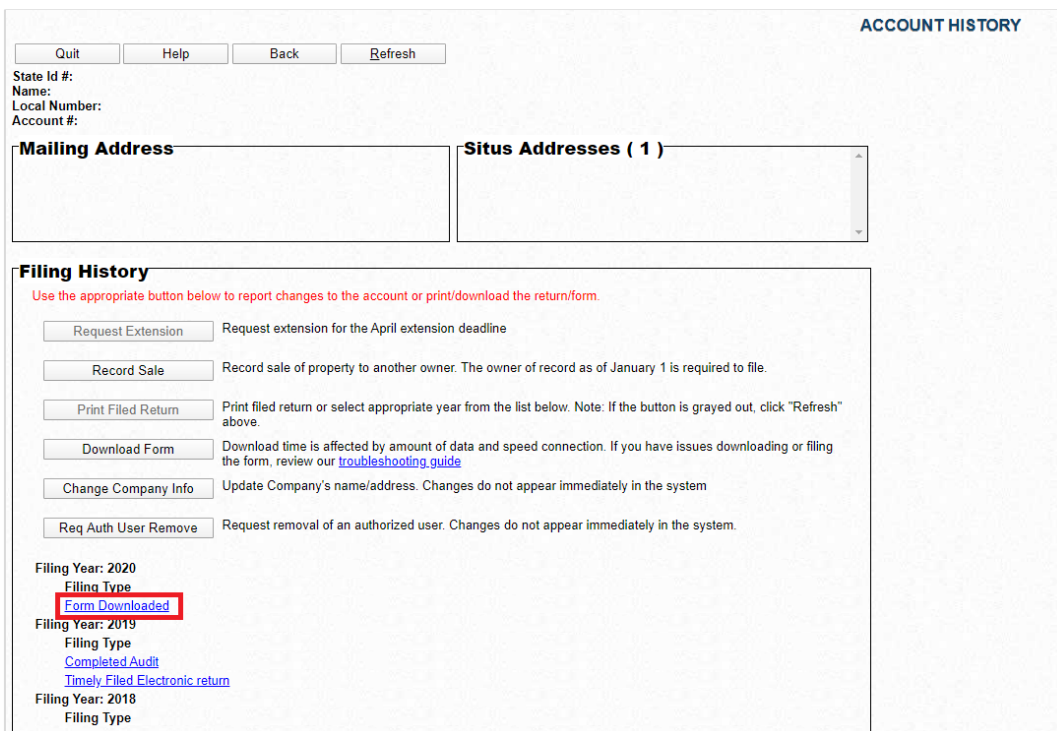
5. Your form is now open in Adobe Reader and is ready to complete/file.



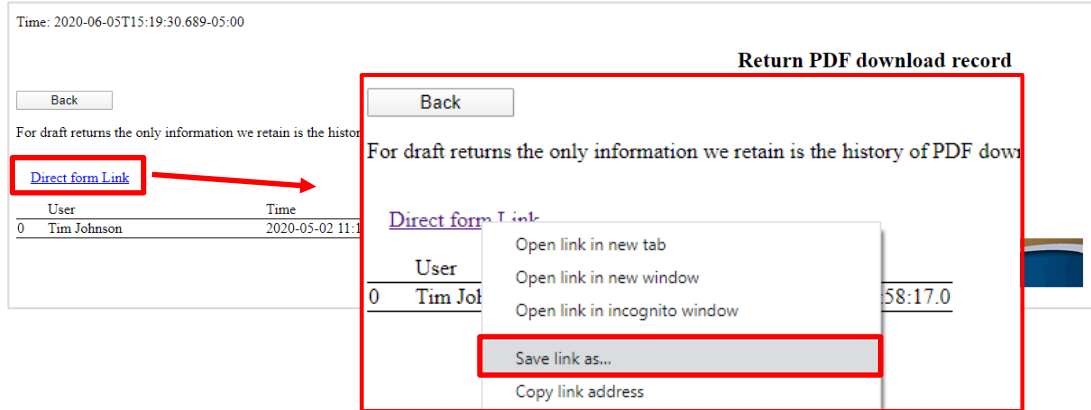
B. Another download method in Chrome – MAS direct form link

If you are still having issues after following the instructions above, try to download the form within the Manufacturing Assessment System through the direct form link.

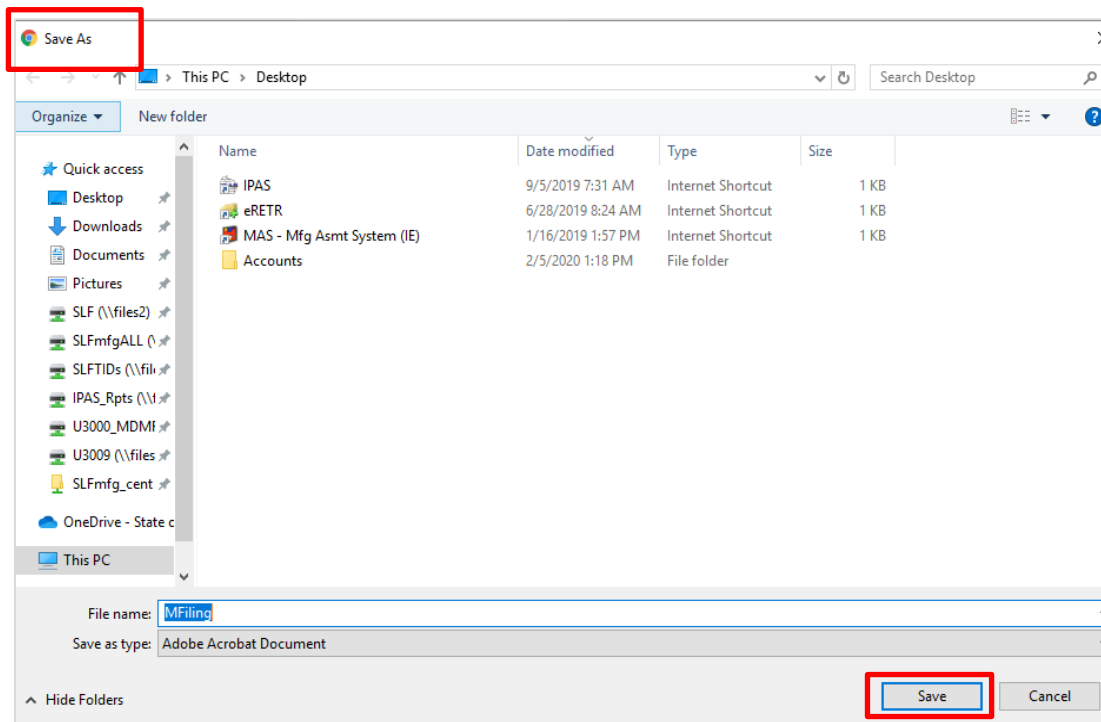
1. From the MAS home page:
 - a. Click the account you would like to access
 - b. Go to your Account History page. Click "Form Downloaded" in the Filing History box



2. After clicking "Form Downloaded," the "Return PDF download record" page appears
 - a. Right-click "Direct form Link"
 - b. Select "Save link as..."

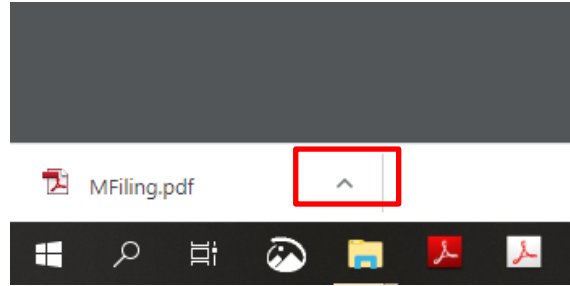


3. After clicking the direct form link, a menu appears – select "Save link as" and – choose a location to save the form, then click "Save"

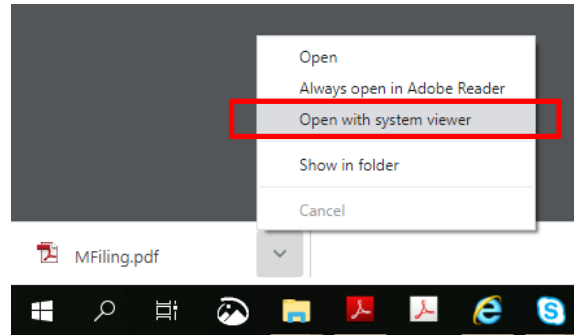


4. After saving the form, it appears at the bottom of your screen in the Google Chrome download bar.

a. Click the arrow symbol next to the document to view a dropdown menu



b. In the dropdown, select "Open with system viewer." It may take up to 15 seconds to open. The form will open in Adobe Reader.



5. Your form is now open in Adobe Reader and is ready to complete/file.

