

# The Taxpayer Debt Summary Search Page

- This page allows you to search for a specific taxpayer/debtor in the Agency Setoff Program.



# The Taxpayer Debt Summary Search Page

- This page allows you to search for a specific taxpayer/debtor in the Agency Setoff Program.
- You must enter the taxpayer's ID Number (either SSN, FEIN or DLN).



# The Taxpayer Debt Summary Search Page

- This page allows you to search for a specific taxpayer/debtor in the Agency Setoff Program.
- You must enter the taxpayer's ID Number (either SSN, FEIN or DLN).
- And select the ID Type you just entered.





## TRIP External (Query Access)

**Taxpayer Debt Summary:** Allows you to query and get the taxpayer debt information.

**Account Summary:** Allows you to generate a report showing the entire debt inventory belonging to your agency.

**FAQ's:** Displays information about DOR's refund interception program and contains a list of frequently asked questions.

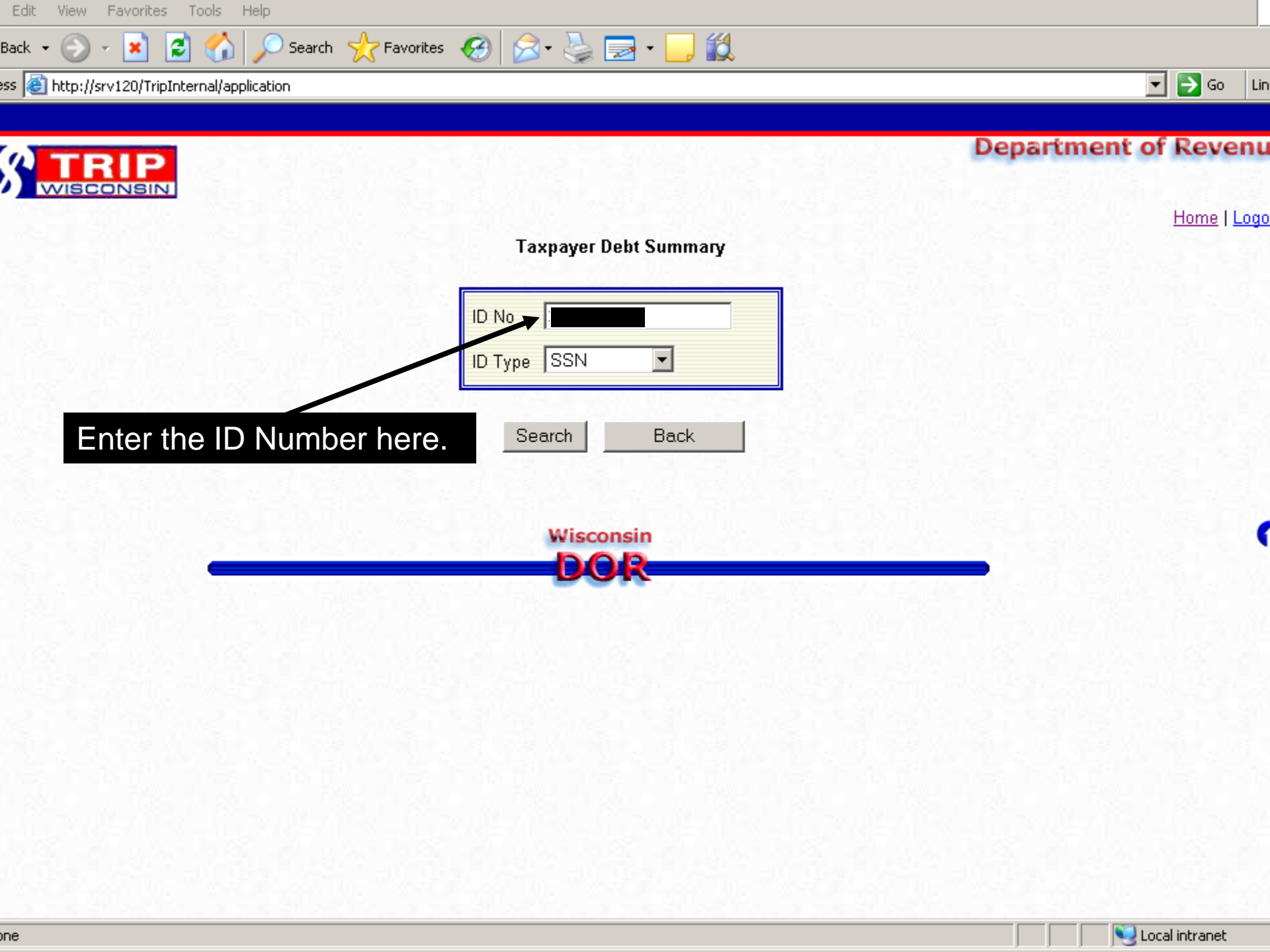
**Logout:** Logs you out from the TRIP External (Query Access) module.

[Debt Summary](#)[Account Summary](#)[FAQ](#)[Logout](#)

## Messages

[TEST 1 MODIFIED\(05/17/2006\)](#)[NEW LEGISLATION\(04/21/2006\)](#)[TEST 3\(04/21/2006\)](#)[TEST 4 MODIFY AGAIN\(04/21/2006\)](#)[TEST 2\(04/21/2006\)](#)[THOSE THAT SHALL NOT BE NAMED  
\(04/21/2006\)](#)[NO LOGS ALLOWED\(04/19/2006\)](#)

From the 'Main Menu' page,  
click the 'Debt Summary'  
button.



### Taxpayer Debt Summary

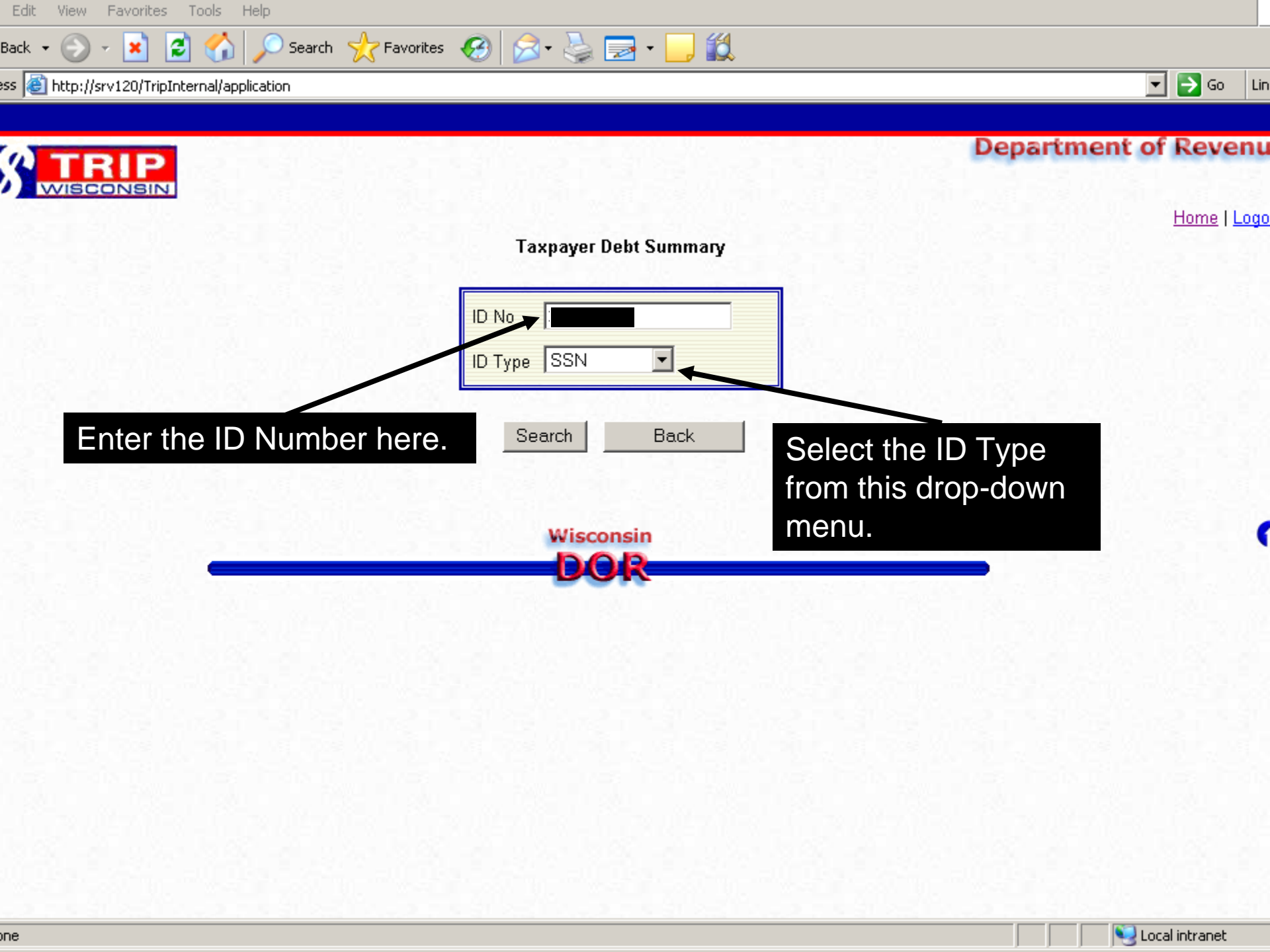
ID No.	<input type="text" value="XXXXXXXXXX"/>
ID Type	<input type="text" value="SSN"/>

Enter the ID Number here.

Search

Back





### Taxpayer Debt Summary

ID No	<input type="text" value="[REDACTED]"/>
ID Type	SSN <input type="button" value="v"/>

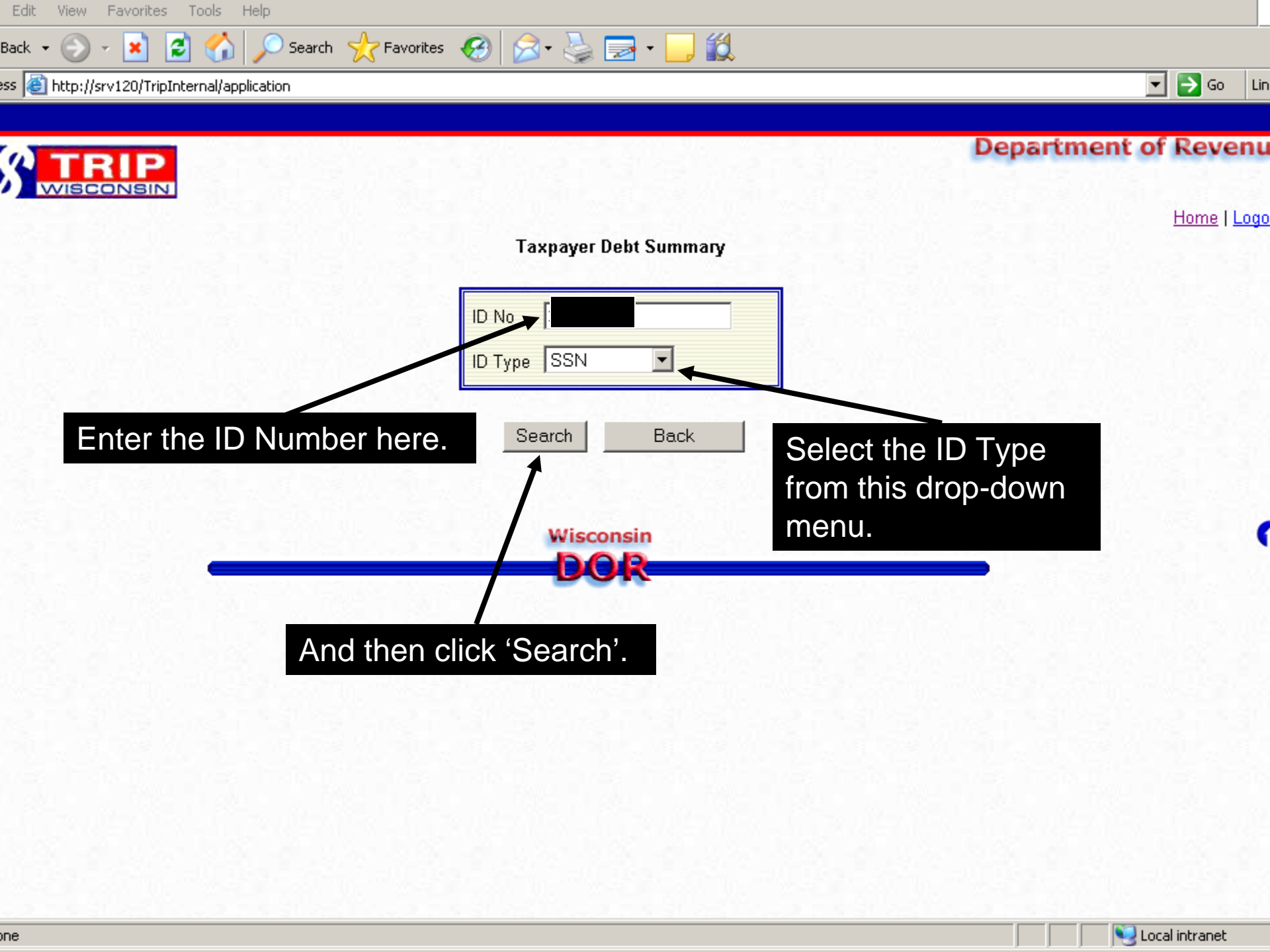
Enter the ID Number here.

Search

Back

Select the ID Type from this drop-down menu.





### Taxpayer Debt Summary

ID No. [Redacted]

ID Type [SSN]

Enter the ID Number here.

Select the ID Type from this drop-down menu.

And then click 'Search'.





Taxpayer Debt Summary Report

This is the top half of the 'Taxpayer Debt Summary Report' page.

SSN : 123456789

Last Name: BAHR First Name: FRED

Suffix: Middle Initial:

Total No. of Debts: 7 Total Balance Due: 1616.15

Debt No.	Agency ID	Agency Name	Telephone	Contact Person
<a href="#">00001</a>	435-079	WI DWD--BUREAU OF CHILD SUPPORT (MILWAUKEE COUNTY)	414-278-5160	RECEPTIONIST
<a href="#">00002</a>	435-131	WI DWD--BUREAU OF CHILD SUPPORT (WASHINGTON COUNTY)	262-335-4377	RECEPTIONIST
<a href="#">00003</a>	967-999	WAUKESHA COUNTY COLLECTIONS DIVISION	262-548-7309	RECEPTIONIST
<a href="#">00004</a>	913-998	DANE COUNTY CLERK OF COURTS (HES)	608-274-7764	PAULINE KUSSART
<a href="#">00005</a>	966-999	WASHINGTON COUNTY CLERK OF COURTS	262-335-4390	ACCOUNTING SUPERVISOR
<a href="#">00006</a>	435-131	WI DWD--BUREAU OF CHILD SUPPORT (WASHINGTON COUNTY)	262-335-4377	RECEPTIONIST
<a href="#">00007</a>	913-998	DANE COUNTY CLERK OF COURTS (HES)	608-274-7764	PAULINE KUSSART

Start Previous Next End 1 to 7 of 7



Taxpayer Debt Summary Report

The taxpayer name and ID number are displayed here.

<b>SSN :</b>	123456789	<b>First Name:</b>	FRED
<b>Last Name:</b>	BAHR	<b>Middle Initial:</b>	
<b>Suffix:</b>		<b>Total No. of Debts:</b>	7
		<b>Total Balance Due:</b>	1616.15

Debt No.	Agency ID	Agency Name	Telephone	Contact Person
<a href="#">00001</a>	435-079	WI DWD--BUREAU OF CHILD SUPPORT (MILWAUKEE COUNTY)	414-278-5160	RECEPTIONIST
<a href="#">00002</a>	435-131	WI DWD--BUREAU OF CHILD SUPPORT (WASHINGTON COUNTY)	262-335-4377	RECEPTIONIST
<a href="#">00003</a>	967-999	WAUKESHA COUNTY COLLECTIONS DIVISION	262-548-7309	RECEPTIONIST
<a href="#">00004</a>	913-998	DANE COUNTY CLERK OF COURTS (HES)	608-274-7764	PAULINE KUSSART
<a href="#">00005</a>	966-999	WASHINGTON COUNTY CLERK OF COURTS	262-335-4390	ACCOUNTING SUPERVISOR
<a href="#">00006</a>	435-131	WI DWD--BUREAU OF CHILD SUPPORT (WASHINGTON COUNTY)	262-335-4377	RECEPTIONIST
<a href="#">00007</a>	913-998	DANE COUNTY CLERK OF COURTS (HES)	608-274-7764	PAULINE KUSSART



Taxpayer Debt Summary Report

The total number of debts and total balance due are displayed here.

SSN : 123456789

Last Name: BAHR First Name: FRED

Suffix: Middle Initial:

**Total No. of Debts: 7**      **Total Balance Due: 1616.15**

Debt No.	Agency ID	Agency Name	Telephone	Contact Person
<a href="#">00001</a>	435-079	WI DWD--BUREAU OF CHILD SUPPORT (MILWAUKEE COUNTY)	414-278-5160	RECEPTIONIST
<a href="#">00002</a>	435-131	WI DWD--BUREAU OF CHILD SUPPORT (WASHINGTON COUNTY)	262-335-4377	RECEPTIONIST
<a href="#">00003</a>	967-999	WAUKESHA COUNTY COLLECTIONS DIVISION	262-548-7309	RECEPTIONIST
<a href="#">00004</a>	913-998	DANE COUNTY CLERK OF COURTS (HES)	608-274-7764	PAULINE KUSSART
<a href="#">00005</a>	966-999	WASHINGTON COUNTY CLERK OF COURTS	262-335-4390	ACCOUNTING SUPERVISOR
<a href="#">00006</a>	435-131	WI DWD--BUREAU OF CHILD SUPPORT (WASHINGTON COUNTY)	262-335-4377	RECEPTIONIST
<a href="#">00007</a>	913-998	DANE COUNTY CLERK OF COURTS (HES)	608-274-7764	PAULINE KUSSART



Taxpayer Debt Summary Report

Below this information is a list of all the debts certified for this specific taxpayer.

SSN : 123456789

Last Name: BAHR First Name: FRED

Suffix: Middle Initial:

Total No. of Debts: 7 Total Balance Due: 1616.15

Debt No.	Agency ID	Agency Name	Telephone	Contact Person
<a href="#">00001</a>	435-079	WI DWD--BUREAU OF CHILD SUPPORT (MILWAUKEE COUNTY)	414-278-5160	RECEPTIONIST
<a href="#">00002</a>	435-131	WI DWD--BUREAU OF CHILD SUPPORT (WASHINGTON COUNTY)	262-335-4377	RECEPTIONIST
<a href="#">00003</a>	967-999	WAUKESHA COUNTY COLLECTIONS DIVISION	262-548-7309	RECEPTIONIST
<a href="#">00004</a>	913-998	DANE COUNTY CLERK OF COURTS (HES)	608-274-7764	PAULINE KUSSART
<a href="#">00005</a>	966-999	WASHINGTON COUNTY CLERK OF COURTS	262-335-4390	ACCOUNTING SUPERVISOR
<a href="#">00006</a>	435-131	WI DWD--BUREAU OF CHILD SUPPORT (WASHINGTON COUNTY)	262-335-4377	RECEPTIONIST
<a href="#">00007</a>	913-998	DANE COUNTY CLERK OF COURTS (HES)	608-274-7764	PAULINE KUSSART

Start Previous Next End 1 to 7 of 7



The Agency ID . . .

Taxpayer Debt Summary Report

SSN : 123456789

Last Name: BAHR First Name: FRED

Suffix: Middle Initial:

Total No. of Debts: 7 Total Balance Due: 1616.15

Debt No.	Agency ID	Agency Name	Telephone	Contact Person
<a href="#">00001</a>	435-079	WI DWD--BUREAU OF CHILD SUPPORT (MILWAUKEE COUNTY)	414-278-5160	RECEPTIONIST
<a href="#">00002</a>	435-131	WI DWD--BUREAU OF CHILD SUPPORT (WASHINGTON COUNTY)	262-335-4377	RECEPTIONIST
<a href="#">00003</a>	967-999	WAUKESHA COUNTY COLLECTIONS DIVISION	262-548-7309	RECEPTIONIST
<a href="#">00004</a>	913-998	DANE COUNTY CLERK OF COURTS (HES)	608-274-7764	PAULINE KUSSART
<a href="#">00005</a>	966-999	WASHINGTON COUNTY CLERK OF COURTS	262-335-4390	ACCOUNTING SUPERVISOR
<a href="#">00006</a>	435-131	WI DWD--BUREAU OF CHILD SUPPORT (WASHINGTON COUNTY)	262-335-4377	RECEPTIONIST
<a href="#">00007</a>	913-998	DANE COUNTY CLERK OF COURTS (HES)	608-274-7764	PAULINE KUSSART

Start Previous Next End 1 to 7 of 7



Taxpayer Debt Summary Report

The Agency ID, Agency Name . . .

SSN : 123456789  
 Last Name: BAHR  
 Suffix:  
 Total No. of Debts: 7

First Name: FRED  
 Middle Initial:  
 Total Balance Due: 1616.15

Debt No.	Agency ID	Agency Name	Telephone	Contact Person
<a href="#">00001</a>	435-079	WI DWD--BUREAU OF CHILD SUPPORT (MILWAUKEE COUNTY)	414-278-5160	RECEPTIONIST
<a href="#">00002</a>	435-131	WI DWD--BUREAU OF CHILD SUPPORT (WASHINGTON COUNTY)	262-335-4377	RECEPTIONIST
<a href="#">00003</a>	967-999	WAUKESHA COUNTY COLLECTIONS DIVISION	262-548-7309	RECEPTIONIST
<a href="#">00004</a>	913-998	DANE COUNTY CLERK OF COURTS (HES)	608-274-7764	PAULINE KUSSART
<a href="#">00005</a>	966-999	WASHINGTON COUNTY CLERK OF COURTS	262-335-4390	ACCOUNTING SUPERVISOR
<a href="#">00006</a>	435-131	WI DWD--BUREAU OF CHILD SUPPORT (WASHINGTON COUNTY)	262-335-4377	RECEPTIONIST
<a href="#">00007</a>	913-998	DANE COUNTY CLERK OF COURTS (HES)	608-274-7764	PAULINE KUSSART

Start Previous Next End 1 to 7 of 7



Taxpayer Debt Summary Report

The Agency ID, Agency Name, Phone Number . . .

SSN : 123456789  
 Last Name: BAHR  
 Suffix:  
 Total No. of Debts: 7

First Name: FRED  
 Middle Initial:  
 Total Balance Due: 1616.15

Debt No.	Agency ID	Agency Name	Telephone	Contact Person
<a href="#">00001</a>	435-079	WI DWD--BUREAU OF CHILD SUPPORT (MILWAUKEE COUNTY)	414-278-5160	RECEPTIONIST
<a href="#">00002</a>	435-131	WI DWD--BUREAU OF CHILD SUPPORT (WASHINGTON COUNTY)	262-335-4377	RECEPTIONIST
<a href="#">00003</a>	967-999	WAUKESHA COUNTY COLLECTIONS DIVISION	262-548-7309	RECEPTIONIST
<a href="#">00004</a>	913-998	DANE COUNTY CLERK OF COURTS (HES)	608-274-7764	PAULINE KUSSART
<a href="#">00005</a>	966-999	WASHINGTON COUNTY CLERK OF COURTS	262-335-4390	ACCOUNTING SUPERVISOR
<a href="#">00006</a>	435-131	WI DWD--BUREAU OF CHILD SUPPORT (WASHINGTON COUNTY)	262-335-4377	RECEPTIONIST
<a href="#">00007</a>	913-998	DANE COUNTY CLERK OF COURTS (HES)	608-274-7764	PAULINE KUSSART

Start Previous Next End 1 to 7 of 7



Taxpayer Debt Summary Report

SSN : 123456789

Last Name: BAHR First Name: FRED

Suffix: Middle Initial:

Total No. of Debts: 7 Total Balance Due: 1616.15

The Agency ID, Agency Name, Phone Number, and Contact Person are displayed for each debt.

Debt No.	Agency ID	Agency Name	Telephone	Contact Person
<a href="#">00001</a>	435-079	WI DWD--BUREAU OF CHILD SUPPORT (MILWAUKEE COUNTY)	414-278-5160	RECEPTIONIST
<a href="#">00002</a>	435-131	WI DWD--BUREAU OF CHILD SUPPORT (WASHINGTON COUNTY)	262-335-4377	RECEPTIONIST
<a href="#">00003</a>	967-999	WAUKESHA COUNTY COLLECTIONS DIVISION	262-548-7309	RECEPTIONIST
<a href="#">00004</a>	913-998	DANE COUNTY CLERK OF COURTS (HES)	608-274-7764	PAULINE KUSSART
<a href="#">00005</a>	966-999	WASHINGTON COUNTY CLERK OF COURTS	262-335-4390	ACCOUNTING SUPERVISOR
<a href="#">00006</a>	435-131	WI DWD--BUREAU OF CHILD SUPPORT (WASHINGTON COUNTY)	262-335-4377	RECEPTIONIST
<a href="#">00007</a>	913-998	DANE COUNTY CLERK OF COURTS (HES)	608-274-7764	PAULINE KUSSART

Start Previous Next End 1 to 7 of 7



Taxpayer Debt Summary Report

SSN : 123456789

Last Name: BAHR First Name:

Suffix: Middle Initial:

Total No. of Debts: 7 Total Balance Due: 1616.15

If there were more than 10 debts certified for an individual you would click the 'Next' button to see debts 11 – 20.

Debt No.	Agency ID	Agency Name	Telephone	Contact Person
<a href="#">00001</a>	435-079	WI DWD--BUREAU OF CHILD SUPPORT (MILWAUKEE COUNTY)	414-278-5160	RECEPTIONIST
<a href="#">00002</a>	435-131	WI DWD--BUREAU OF CHILD SUPPORT (WASHINGTON COUNTY)	262-335-4377	RECEPTIONIST
<a href="#">00003</a>	967-999	WAUKESHA COUNTY COLLECTIONS DIVISION	262-548-7309	RECEPTIONIST
<a href="#">00004</a>	913-998	DANE COUNTY CLERK OF COURTS (HES)	608-274-7764	PAULINE KUSSART
<a href="#">00005</a>	966-999	WASHINGTON COUNTY CLERK OF COURTS	262-335-4390	ACCOUNTING SUPERVISOR
<a href="#">00006</a>	435-131	WI DWD--BUREAU OF CHILD SUPPORT (WASHINGTON COUNTY)	262-335-4377	RECEPTIONIST
<a href="#">00007</a>	913-998	DANE COUNTY CLERK OF COURTS (HES)	608-274-7764	PAULINE KUSSART

Start Previous **Next** End 1 to 7 of 7



Taxpayer Debt Summary Report

... or the 'End' button to go to the end of the list of debts.

SSN : 123456789

Last Name: BAHR First Name: FRED

Suffix: Middle Initial:

Total No. of Debts: 7 Total Balance Due: 1616.15

Debt No.	Agency ID	Agency Name	Telephone	Contact Person
<a href="#">00001</a>	435-079	WI DWD--BUREAU OF CHILD SUPPORT (MILWAUKEE COUNTY)	414-278-5160	RECEPTIONIST
<a href="#">00002</a>	435-131	WI DWD--BUREAU OF CHILD SUPPORT (WASHINGTON COUNTY)	262-335-4377	RECEPTIONIST
<a href="#">00003</a>	967-999	WAUKESHA COUNTY COLLECTIONS DIVISION	262-548-7309	RECEPTIONIST
<a href="#">00004</a>	913-998	DANE COUNTY CLERK OF COURTS (HES)	608-274-7764	PAULINE KUSSART
<a href="#">00005</a>	966-999	WASHINGTON COUNTY CLERK OF COURTS	262-335-4390	ACCOUNTING SUPERVISOR
<a href="#">00006</a>	435-131	WI DWD--BUREAU OF CHILD SUPPORT (WASHINGTON COUNTY)	262-335-4377	RECEPTIONIST
<a href="#">00007</a>	913-998	DANE COUNTY CLERK OF COURTS (HES)	608-274-7764	PAULINE KUSSART

Start Previous Next End 1 to 7 of 7



### Taxpayer Debt Summary Report

The 'Previous' button works the opposite of 'Next', and 'Start' the opposite of 'End'.

SSN : 123456789

Last Name: BAHR First Name: FRED

Suffix: Middle Initial:

Total No. of Debts: 7 Total Balance Due: 1616.15

Debt No.	Agency ID	Agency Name	Telephone	Contact Person
<a href="#">00001</a>	435-079	WI DWD--BUREAU OF CHILD SUPPORT (MILWAUKEE COUNTY)	414-278-5160	RECEPTIONIST
<a href="#">00002</a>	435-131	WI DWD--BUREAU OF CHILD SUPPORT (WASHINGTON COUNTY)	262-335-4377	RECEPTIONIST
<a href="#">00003</a>	967-999	WAUKESHA COUNTY COLLECTIONS DIVISION	262-548-7309	RECEPTIONIST
<a href="#">00004</a>	913-998	DANE COUNTY CLERK OF COURTS (HES)	608-274-7764	PAULINE KUSSART
<a href="#">00005</a>	966-999	WASHINGTON COUNTY CLERK OF COURTS	262-335-4390	ACCOUNTING SUPERVISOR
<a href="#">00006</a>	435-131	WI DWD--BUREAU OF CHILD SUPPORT (WASHINGTON COUNTY)	262-335-4377	RECEPTIONIST
<a href="#">00007</a>	913-998	DANE COUNTY CLERK OF COURTS (HES)	608-274-7764	PAULINE KUSSART

Start Previous Next End 1 to 7 of 7

<a href="#">00006</a>	435-131	WTDWD-BUREAU OF CHILD SUPPORT (WASHINGTON COUNTY)	262-335-4377	RECEPTIONIST
<a href="#">00007</a>	913-998	DANE COUNTY CLERK OF COURTS (HES)	608-274-7764	PAULINE KUSSART

Start Previous Next End 1 to 7 of 7

Details for all Debts

Debt No.	Status	Initial Date	Initial Amount	Payments Applied	Non-Payments Applied	Balance Due	Last Posted	Last Source
<a href="#">00001</a>	Active	07/05/2005	\$3786.60	\$-1493.00	\$-1256.60	\$1037.00	04/08/2006	AGY ADJ
<a href="#">00002</a>	Active	07/05/2005	\$60.13	\$0	\$-60.13	\$0.00	02/11/2006	AGY ADJ
<a href="#">00003</a>	Active	07/05/2005	\$212.00	\$0	\$0	\$212.00	07/05/2005	INITIAL
<a href="#">00004</a>	Active	07/05/2005	\$209.00	\$0	\$0	\$209.00	07/05/2005	INITIAL
<a href="#">00005</a>	Active	07/05/2005	\$122.90	\$0	\$0	\$122.90	07/05/2005	INITIAL
<a href="#">00006</a>	Active	07/05/2005	\$37.27	\$0	\$-37.27	\$0.00	02/11/2006	AGY ADJ
<a href="#">00007</a>	Active	12/17/2005	\$35.25	\$0	\$0	\$35.25	12/17/2005	INITIAL

Start Previous Next End 1 to 7 of 7

This is the bottom half of the 'Taxpayer Debt Summary Report' page.

Back



<a href="#">00006</a>	435-131	WTDWD-BUREAU OF CHILD SUPPORT (WASHINGTON COUNTY)	262-335-4377	RECEPTIONIST
<a href="#">00007</a>	913-998	DANE COUNTY CLERK OF COURTS (HES)	608-274-7764	PAULINE KUSSART

Start Previous Next End 1 to 7 of 7

Details for all Debts

Debt No.	Status	Initial Date	Initial Amount	Payments Applied	Non-Payments Applied	Balance Due	Last Posted	Last Source
<a href="#">00001</a>	Active	07/05/2005	\$3786.60	\$-1493.00	\$-1256.60	\$1037.00	04/08/2006	AGY ADJ
<a href="#">00002</a>	Active	07/05/2005	\$60.13	\$0	\$-60.13	\$0.00	02/11/2006	AGY ADJ
<a href="#">00003</a>	Active	07/05/2005	\$212.00	\$0	\$0	\$212.00	07/05/2005	INITIAL
<a href="#">00004</a>	Active	07/05/2005	\$209.00	\$0	\$0	\$209.00	07/05/2005	INITIAL
<a href="#">00005</a>	Active	07/05/2005	\$122.90	\$0	\$0	\$122.90	07/05/2005	INITIAL
<a href="#">00006</a>	Active	07/05/2005	\$37.27	\$0	\$-37.27	\$0.00	02/11/2006	AGY ADJ
<a href="#">00007</a>	Active	12/17/2005	\$35.25	\$0	\$0	\$35.25	12/17/2005	INITIAL

Start Previous Next End 1 to 7 of 7

This half of the page displays a financial summary for each debt certified for this taxpayer.

Back



<a href="#">00006</a>	435-131	WTDWD-BUREAU OF CHILD SUPPORT (WASHINGTON COUNTY)	262-335-4377	RECEPTIONIST
<a href="#">00007</a>	913-998	DANE COUNTY CLERK OF COURTS (HES)	608-274-7764	PAULINE KUSSART

Start Previous Next End 1 to 7 of 7

Details for all Debts

Debt No.	Status	Initial Date	Initial Amount	Payments Applied	Non-Payments Applied	Balance Due	Last Posted	Last Source
<a href="#">00001</a>	Active	07/05/2005	\$3786.60	\$-1493.00	\$-1256.60	\$1037.00	04/08/2006	AGY ADJ
<a href="#">00002</a>	Active	07/05/2005	\$60.13	\$0	\$-60.13	\$0.00	02/11/2006	AGY ADJ
<a href="#">00003</a>	Active	07/05/2005	\$212.00	\$0	\$0	\$212.00	07/05/2005	INITIAL
<a href="#">00004</a>	Active	07/05/2005	\$209.00	\$0	\$0	\$209.00	07/05/2005	INITIAL
<a href="#">00005</a>	Active	07/05/2005	\$122.90	\$0	\$0	\$122.90	07/05/2005	INITIAL
<a href="#">00006</a>	Active	07/05/2005	\$37.27	\$0	\$-37.27	\$0.00	02/11/2006	AGY ADJ
<a href="#">00007</a>	Active	12/17/2005	\$35.25	\$0	\$0	\$35.25	12/17/2005	INITIAL

Start Previous Next End 1 to 7 of 7

This information includes the 'Status' of the debt (either Active or Inactive) . . .

Back



<a href="#">00006</a>	435-131	WTDWD-BUREAU OF CHILD SUPPORT (WASHINGTON COUNTY)	262-335-4377	RECEPTIONIST
<a href="#">00007</a>	913-998	DANE COUNTY CLERK OF COURTS (HES)	608-274-7764	PAULINE KUSSART

Start Previous Next End 1 to 7 of 7

Details for all Debts

Debt No.	Status	Initial Date	Initial Amount	Payments Applied	Non-Payments Applied	Balance Due	Last Posted	Last Source
<a href="#">00001</a>	Active	07/05/2005	\$3786.60	\$-1493.00	\$-1256.60	\$1037.00	04/08/2006	AGY ADJ
<a href="#">00002</a>	Active	07/05/2005	\$60.13	\$0	\$-60.13	\$0.00	02/11/2006	AGY ADJ
<a href="#">00003</a>	Active	07/05/2005	\$212.00	\$0	\$0	\$212.00	07/05/2005	INITIAL
<a href="#">00004</a>	Active	07/05/2005	\$209.00	\$0	\$0	\$209.00	07/05/2005	INITIAL
<a href="#">00005</a>	Active	07/05/2005	\$122.90	\$0	\$0	\$122.90	07/05/2005	INITIAL
<a href="#">00006</a>	Active	07/05/2005	\$37.27	\$0	\$-37.27	\$0.00	02/11/2006	AGY ADJ
<a href="#">00007</a>	Active	12/17/2005	\$35.25	\$0	\$0	\$35.25	12/17/2005	INITIAL

Start Previous Next End 1 to 7 of 7

... the date the debt was certified ...

Back



<a href="#">00006</a>	435-131	WTDWD-BUREAU OF CHILD SUPPORT (WASHINGTON COUNTY)	262-335-4377	RECEPTIONIST
<a href="#">00007</a>	913-998	DANE COUNTY CLERK OF COURTS (HES)	608-274-7764	PAULINE KUSSART

Start Previous Next End 1 to 7 of 7

Details for all Debts

Debt No.	Status	Initial Date	Initial Amount	Payments Applied	Non-Payments Applied	Balance Due	Last Posted	Last Source
<a href="#">00001</a>	Active	07/05/2005	\$3786.60	\$-1493.00	\$-1256.60	\$1037.00	04/08/2006	AGY ADJ
<a href="#">00002</a>	Active	07/05/2005	\$60.13	\$0	\$-60.13	\$0.00	02/11/2006	AGY ADJ
<a href="#">00003</a>	Active	07/05/2005	\$212.00	\$0	\$0	\$212.00	07/05/2005	INITIAL
<a href="#">00004</a>	Active	07/05/2005	\$209.00	\$0	\$0	\$209.00	07/05/2005	INITIAL
<a href="#">00005</a>	Active	07/05/2005	\$122.90	\$0	\$0	\$122.90	07/05/2005	INITIAL
<a href="#">00006</a>	Active	07/05/2005	\$37.27	\$0	\$-37.27	\$0.00	02/11/2006	AGY ADJ
<a href="#">00007</a>	Active	12/17/2005	\$35.25	\$0	\$0	\$35.25	12/17/2005	INITIAL

Start Previous Next End 1 to 7 of 7

... and the initial dollar amount of the debt.

Back



<a href="#">0006</a>	435-131	WTDWD-BUREAU OF CHILD SUPPORT (WASHINGTON COUNTY)	262-335-4377	RECEPTIONIST
<a href="#">0007</a>	913-998	DANE COUNTY CLERK OF COURTS (HES)	608-274-7764	PAULINE KUSSART

Start Previous Next End 1 to 7 of 7

Details for all Debts

Debt No.	Status	Initial Date	Initial Amount	Payments Applied	Non-Payments Applied	Balance Due	Last Posted	Last Source
<a href="#">00001</a>	Active	07/05/2005	\$3786.60	\$-1493.00	\$-1256.60	\$1037.00	04/08/2006	AGY ADJ
<a href="#">00002</a>	Active	07/05/2005	\$60.13	\$0	\$-60.13	\$0.00	02/11/2006	AGY ADJ
<a href="#">00003</a>	Active	07/05/2005	\$212.00	\$0	\$0	\$212.00	07/05/2005	INITIAL
<a href="#">00004</a>	Active	07/05/2005	\$209.00	\$0	\$0	\$209.00	07/05/2005	INITIAL
<a href="#">00005</a>	Active	07/05/2005	\$122.90	\$0	\$0	\$122.90	07/05/2005	INITIAL
<a href="#">00006</a>	Active	07/05/2005	\$37.27	\$0	\$-37.27	\$0.00	02/11/2006	AGY ADJ
<a href="#">00007</a>	Active	12/17/2005	\$35.25	\$0	\$0	\$35.25	12/17/2005	INITIAL

The 'Payments Applied' column totals all of the refund interceptions that have posted against this debt.

Back



<a href="#">0006</a>	435-131	WTDWD--BUREAU OF CHILD SUPPORT (WASHINGTON COUNTY)	262-335-4377	RECEPTIONIST
<a href="#">0007</a>	913-998	DANE COUNTY CLERK OF COURTS (HES)	608-274-7764	PAULINE KUSSART

Start Previous Next End 1 to 7 of 7

Details for all Debts

Debt No.	Status	Initial Date	Initial Amount	Payments Applied	Non-Payments Applied	Balance Due	Last Posted	Last Source
<a href="#">00001</a>	Active	07/05/2005	\$3786.60	\$-1493.00	\$-1256.60	\$1037.00	04/08/2006	AGY ADJ
<a href="#">00002</a>	Active	07/05/2005	\$60.13	\$0	\$-60.13	\$0.00	02/11/2006	AGY ADJ
<a href="#">00003</a>	Active	07/05/2005	\$212.00	\$0	\$0	\$212.00	07/05/2005	INITIAL
<a href="#">00004</a>	Active	07/05/2005	\$209.00	\$0	\$0	\$209.00	07/05/2005	INITIAL
<a href="#">00005</a>	Active	07/05/2005	\$122.90	\$0	\$0	\$122.90	07/05/2005	INITIAL
<a href="#">00006</a>	Active	07/05/2005	\$37.27	\$0	\$-37.27	\$0.00	02/11/2006	AGY ADJ
<a href="#">00007</a>	Active	12/17/2005	\$35.25	\$0	\$0	\$35.25	12/17/2005	INITIAL

The 'Non-Payments Applied' column totals all of the balance adjustments (both by the agency and by DOR) that have posted against this debt.

Back



<a href="#">00006</a>	435-131	WTDWD-BUREAU OF CHILD SUPPORT (WASHINGTON COUNTY)	262-335-4377	RECEPTIONIST
<a href="#">00007</a>	913-998	DANE COUNTY CLERK OF COURTS (HES)	608-274-7764	PAULINE KUSSART

Start Previous Next End 1 to 7 of 7

Details for all Debts

Debt No.	Status	Initial Date	Initial Amount	Payments Applied	Non-Payments Applied	Balance Due	Last Posted	Last Source
<a href="#">00001</a>	Active	07/05/2005	\$3786.60	\$-1493.00	\$-1256.60	\$1037.00	04/08/2006	AGY ADJ
<a href="#">00002</a>	Active	07/05/2005	\$60.13	\$0	\$-60.13	\$0.00	02/11/2006	AGY ADJ
<a href="#">00003</a>	Active	07/05/2005	\$212.00	\$0	\$0	\$212.00	07/05/2005	INITIAL
<a href="#">00004</a>	Active	07/05/2005	\$209.00	\$0	\$0	\$209.00	07/05/2005	INITIAL
<a href="#">00005</a>	Active	07/05/2005	\$122.90	\$0	\$0	\$122.90	07/05/2005	INITIAL
<a href="#">00006</a>	Active	07/05/2005	\$37.27	\$0	\$-37.27	\$0.00	02/11/2006	AGY ADJ
<a href="#">00007</a>	Active	12/17/2005	\$35.25	\$0	\$0	\$35.25	12/17/2005	INITIAL

The 'Balance Due' column shows the current balance of the debt.

Back



<a href="#">00006</a>	435-131	WTDWD-BUREAU OF CHILD SUPPORT (WASHINGTON COUNTY)	262-335-4377	RECEPTIONIST
<a href="#">00007</a>	913-998	DANE COUNTY CLERK OF COURTS (HES)	608-274-7764	PAULINE KUSSART

Start Previous Next End 1 to 7 of 7

Details for all Debts

Debt No.	Status	Initial Date	Initial Amount	Payments Applied	Non-Payments Applied	Balance Due	Last Posted	Last Source
<a href="#">00001</a>	Active	07/05/2005	\$3786.60	\$-1493.00	\$-1256.60	\$1037.00	04/08/2006	AGY ADJ
<a href="#">00002</a>	Active	07/05/2005	\$60.13	\$0	\$-60.13	\$0.00	02/11/2006	AGY ADJ
<a href="#">00003</a>	Active	07/05/2005	\$212.00	\$0	\$0	\$212.00	07/05/2005	INITIAL
<a href="#">00004</a>	Active	07/05/2005	\$209.00	\$0	\$0	\$209.00	07/05/2005	INITIAL
<a href="#">00005</a>	Active	07/05/2005	\$122.90	\$0	\$0	\$122.90	07/05/2005	INITIAL
<a href="#">00006</a>	Active	07/05/2005	\$37.27	\$0	\$-37.27	\$0.00	02/11/2006	AGY ADJ
<a href="#">00007</a>	Active	12/17/2005	\$35.25	\$0	\$0	\$35.25	12/17/2005	INITIAL

The 'Last Posted' column shows the date of the last financial transaction that posted against the debt . . .

Back



<a href="#">00006</a>	435-131	WTDWD--BUREAU OF CHILD SUPPORT (WASHINGTON COUNTY)	262-335-4377	RECEPTIONIST
<a href="#">00007</a>	913-998	DANE COUNTY CLERK OF COURTS (HES)	608-274-7764	PAULINE KUSSART

Start Previous Next End 1 to 7 of 7

Details for all Debts

Debt No.	Status	Initial Date	Initial Amount	Payments Applied	Non-Payments Applied	Balance Due	Last Posted	Last Source
<a href="#">00001</a>	Active	07/05/2005	\$3786.60	\$-1493.00	\$-1256.60	\$1037.00	04/08/2006	AGY ADJ
<a href="#">00002</a>	Active	07/05/2005	\$60.13	\$0	\$-60.13	\$0.00	02/11/2006	AGY ADJ
<a href="#">00003</a>	Active	07/05/2005	\$212.00	\$0	\$0	\$212.00	07/05/2005	INITIAL
<a href="#">00004</a>	Active	07/05/2005	\$209.00	\$0	\$0	\$209.00	07/05/2005	INITIAL
<a href="#">00005</a>	Active	07/05/2005	\$122.90	\$0	\$0	\$122.90	07/05/2005	INITIAL
<a href="#">00006</a>	Active	07/05/2005	\$37.27	\$0	\$-37.27	\$0.00	02/11/2006	AGY ADJ
<a href="#">00007</a>	Active	12/17/2005	\$35.25	\$0	\$0	\$35.25	12/17/2005	INITIAL

... and the 'Last Source' column tells you the type of transaction that last posted against the debt.

Back



<a href="#">00006</a>	435-131	WTDWD--BUREAU OF CHILD SUPPORT (WASHINGTON COUNTY)	262-335-4377	RECEPTIONIST
<a href="#">00007</a>	913-998	DANE COUNTY CLERK OF COURTS (HES)	608-274-7764	PAULINE KUSSART

Start Previous Next End 1 to 7 of 7

Details for all Debts

Debt No.	Status	Initial Date	Initial Amount	Payments Applied	Non-Payments Applied	Balance Due	Last Posted	Last Source
<a href="#">00001</a>	Active	07/05/2005	\$3786.60	\$-1493.00	\$-1256.60	\$1037.00	04/08/2006	AGY ADJ
<a href="#">00002</a>	Active	07/05/2005	\$60.13	\$0	\$-60.13	\$0.00	02/11/2006	AGY ADJ
<a href="#">00003</a>	Active	07/05/2005	\$212.00	\$0	\$0	\$212.00	07/05/2005	INITIAL
<a href="#">00004</a>	Active	07/05/2005	\$209.00	\$0	\$0	\$209.00	07/05/2005	INITIAL
<a href="#">00005</a>	Active	07/05/2005	\$122.90	\$0	\$0	\$122.90	07/05/2005	INITIAL
<a href="#">00006</a>	Active	07/05/2005	\$37.27	\$0	\$-37.27	\$0.00	02/11/2006	AGY ADJ
<a href="#">00007</a>	Active	12/17/2005	\$35.25	\$0	\$0	\$35.25	12/17/2005	INITIAL

Typical 'Last Sources' you might see are 'AGY ADJ' (agency balance adjustment), 'DOR ADJ' (DOR balance adjustment), 'INITIAL' (debt setup) . . .

Back



<a href="#">00006</a>	435-131	WTDWD-BUREAU OF CHILD SUPPORT (WASHINGTON COUNTY)	262-335-4377	RECEPTIONIST
<a href="#">00007</a>	913-998	DANE COUNTY CLERK OF COURTS (HES)	608-274-7764	PAULINE KUSSART

Start Previous Next End 1 to 7 of 7

Details for all Debts

Debt No.	Status	Initial Date	Initial Amount	Payments Applied	Non-Payments Applied	Balance Due	Last Posted	Last Source
<a href="#">00001</a>	Active	07/05/2005	\$3786.60	\$-1493.00	\$-1256.60	\$1037.00	04/08/2006	AGY ADJ
<a href="#">00002</a>	Active	07/05/2005	\$60.13	\$0	\$-60.13	\$0.00	02/11/2006	AGY ADJ
<a href="#">00003</a>	Active	07/05/2005	\$212.00	\$0	\$0	\$212.00	07/05/2005	INITIAL
<a href="#">00004</a>	Active	07/05/2005	\$209.00	\$0	\$0	\$209.00	07/05/2005	INITIAL
<a href="#">00005</a>	Active	07/05/2005	\$122.90	\$0	\$0	\$122.90	07/05/2005	INITIAL
<a href="#">00006</a>	Active	07/05/2005	\$37.27	\$0	\$-37.27	\$0.00	02/11/2006	AGY ADJ
<a href="#">00007</a>	Active	12/17/2005	\$35.25	\$0	\$0	\$35.25	12/17/2005	INITIAL

... 'REF INT' (income tax refund interception), 'MAN INT' (manual refund system interception), or 'LOT INT' (lottery prize interception).

Back



<a href="#">00006</a>	435-131	WTDWD-BUREAU OF CHILD SUPPORT (WASHINGTON COUNTY)	262-335-4377	RECEPTIONIST
<a href="#">00007</a>	913-998	DANE COUNTY CLERK OF COURTS (HES)	608-274-7764	PAULINE KUSSART

Start Previous Next End 1 to 7 of 7

Details for all Debts

Debt No.	Status	Initial Date	Initial Amount	Payments Applied	Non-Payments Applied	Balance Due	Last Posted	Last Source
<a href="#">00001</a>	Active	07/05/2005	\$3786.60	\$-1493.00	\$-1256.60	\$1037.00	04/08/2006	AGY ADJ
<a href="#">00002</a>	Active	07/05/2005	\$60.13	\$0	\$-60.13	\$0.00	02/11/2006	AGY ADJ
<a href="#">00003</a>	Active	07/05/2005	\$212.00	\$0	\$0	\$212.00	07/05/2005	INITIAL
<a href="#">00004</a>	Active	07/05/2005	\$209.00	\$0	\$0	\$209.00	07/05/2005	INITIAL
<a href="#">00005</a>	Active	07/05/2005	\$122.90	\$0	\$0	\$122.90	07/05/2005	INITIAL
<a href="#">00006</a>	Active	07/05/2005	\$37.27	\$0	\$-37.27	\$0.00	02/11/2006	AGY ADJ
<a href="#">00007</a>	Active	12/17/2005	\$35.25	\$0	\$0	\$35.25	12/17/2005	INITIAL

There are two ways to get to the 'Detailed Transaction Report' page.

Back

